

Summer 2020

FACULTY SPOTLIGHT

This quarter, we spotlight faculty member **Lisa Reider, PhD**. Dr. Reider is an expert in the design and conduct of multi-center clinical trials in orthopaedic trauma. She is the Associate Director for the Coordinating Center of the Major Extremity Trauma and Rehabilitation Consortium (METRC), a network of over 30 hospitals conducting large prospective studies relevant to the treatment and outcomes of orthopaedic trauma. Her research interests include rehabilitation interventions to promote recovery of physical function after injury, and the impact of orthopaedic trauma in older adults. A summary of Dr. Reider's work can be found [here](#).



RESEARCH FINDINGS

"Social Distancing" Amid a Crisis in Social Isolation and Loneliness

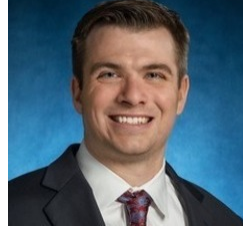
A study by **Thomas Cudjoe** and **Ashwin Kotwal** discusses how to identify and assist older adults at risk for experiencing loneliness in the midst of current physical distancing measures due to the coronavirus disease 2019 (COVID-19) pandemic. The authors suggest clinician screen for social isolation and assess access to phone or video communication technologies. Clinicians may also take the lead on designating individuals who can visit older adults while balancing the risk of COVID-19 exposure and focus on ways to connect older adults with community resources. [Read More](#).



This research was highlighted by [Fox45-Baltimore](#) and [ABC7-Washington](#).

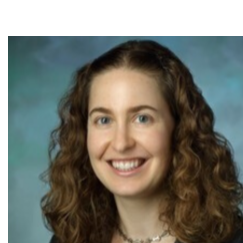
Affording Genetic Therapies in the Medicaid Program

A study by **Jeromie Ballreich**, **Ijeamaka Ezeibilo**, and **Joshua Sharfstein** in *JAMA Pediatrics* explores potential solutions to the challenge of the high cost of genetic therapies and other specialty drugs for diseases of childhood. Findings suggest a pooled subscription model negotiated across therapies and Medicaid programs may allow manufacturers to focus on the cooperation necessary for the administration of these complex therapies and help achieve the shared public and private goal of assuring access to care. [Read More](#).



Are Transplant Centers That Meet Insurer Minimum Volume Requirements Better Quality?

A study by **Lauren Hersch Nicholas** and **Sarah See Stith** in *Medical Care Research and Review* tests whether private insurers' use of volume requirements for kidney transplant centers improve patient outcomes. The researchers used an instrumental variables approach to show that minimum volume requirements in kidney transplantation do not reduce post-transplant mortality. Findings from this paper suggest that volume requirements are not a useful proxy measure for quality and that restricting the number of hospitals from which patients can receive care could reduce access to necessary health care services. [Read More](#).



NEWS FROM THE NATIONAL HEALTH AND AGING TRENDS STUDY

Nine rounds of NHATS have been released, affording annual data from 2011-2019, with three waves of the National Study of Caregivers: 2011, 2015, and 2017. The 10th year of NHATS data collection is underway. Details are available at www.nhats.org. Nearly 4,000 users have registered to access NHATS data, from which 300+ peer-reviewed articles have been published, including:



Race Differences in Characteristics and Experiences of Black and White Caregivers of Older Americans

A study by **Chanee Fabius**, **Jennifer Wolff**, and **Judith Kasper** in *The Gerontologist* uses NHATS and NSOC data to examine associations between caregiver race and caregiving-related effects. The study found relative to white caregivers, black caregivers more often provided in excess of 40 hours of care per week, cared for an older adult with dementia or someone who was living below the federal poverty line or Medicaid-eligible. Black caregivers more often used supportive services and were less likely to report emotional difficulty than whites. Service utilization did not attenuate caregiving-related emotional difficulty or participation restrictions, regardless of race. [Read More](#).



Socioeconomic Disparities in Six-Year Incident Dementia in a Nationally Representative Cohort of U.S. Older Adults: an Examination of Financial Resources

A study by **Laura Samuel**, **Sarah Szanton**, **Jennifer Wolff**, **Katherine Ornstein**, **Lauren Parker**, and **Lauren Gitlin** in *BMC Geriatrics* explores the role of financial strain as a predictor of incident dementia. Results show that higher financial strain predicted greater odds of incident dementia, while higher income and education predicted lower odds. Findings suggest mitigating financial strain through improving access to economic opportunity and strengthening safety net programs and improving access to them in low income groups may complement other ongoing efforts to prevent dementia. [Read More](#).



Evaluation of Hospice Enrollment and Family and Unpaid Caregivers' Experiences With Health Care Workers in the Care of Older Adults During the Last Month of Life

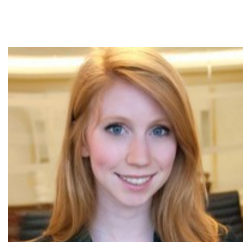
A study by **Jennifer Wolff**, **Vicki Freedman**, **Katherine Ornstein**, **John Mulcahy**, and **Judith Kasper** in *JAMA Network Open* uses NHATS and NSOC data to evaluate family and unpaid caregivers' experiences with health care workers while caring for an older adult near the end of life. End-of-life caregivers commonly assisted with symptom management, participated in medical decision-making, and generally reported favorable experiences communicating with health care workers. However, 1 in 3 were never asked by health care workers if they needed help managing care and just half of caregivers assisting with symptom management received training. [Read More](#).



NEWS & UPDATES

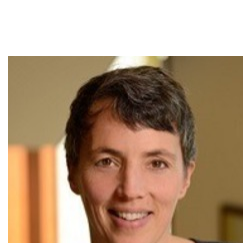
Julia Burgdorf Successfully Defends Dissertation

Congratulations to **Julia Burgdorf, PhD**, who successfully defended her dissertation, "Impact of Family Caregiver Training Needs on Efficiency and Outcomes during Medicare Home Health" on April 30th. Dr. Burgdorf is a health services researcher whose work focuses on the intersection of family caregiving and home-based models of care for older adults. Dr. Burgdorf has transitioned into a postdoctoral fellowship at Johns Hopkins and will be entering the academic job market this fall. To learn more about her research, please email julia.burgdorf@jhu.edu.



School of Nursing Launches New Center to Improve Care for People with Disabilities

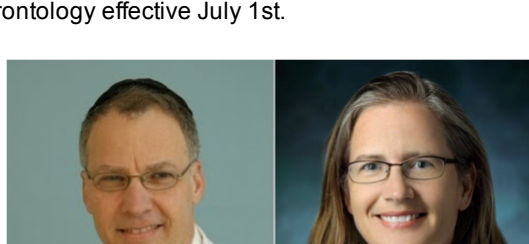
The Johns Hopkins School of Nursing has launched a national center dedicated to improving health and function of people with disabilities and their caregivers called RESILIENCE RRTC (Research and Education to Support the Science of Independent Living for Inclusion and Engagement: National Center of Excellence Rehabilitation Research and Training Centers). **Sarah Szanton** is the Center's director, which will test new ways of delivering the Chicago Parent Program and CAPABLE, developing and testing a new program for caregivers with physical or sensory disabilities, and disseminating findings by influencing policy. [Read More](#).



[Read More](#).

Division of Geriatric Medicine and Gerontology Leadership Transitions

Congratulations to Chris Durso for his new role as Chairman of the Department of Medicine at Johns Hopkins Bayview Medical Center and Cynthia Boyd for serving as Interim Director of the Division of Geriatric Medicine and Gerontology effective July 1st.



SELECT RECENT PUBLICATIONS

Bayliss EA, Shetterly SM, Drace ML, Norton J, Green AR, Reeve E, Wefald LA, Wright L, Maciejewski ML, Sheehan OC, Wolff JL, Gleason KS, Kraus C, Maiyani M, Du Vall M, Boyd CM. [The OPTIMIZE patient- and family-centered, primary care-based deprescribing intervention for older adults with dementia or mild cognitive impairment and multiple chronic conditions: study protocol for a pragmatic cluster randomized controlled trial](#). *Trials*. 2020 Jun 18;21(1):542.

Davidson PM, Szanton SL. [Nursing homes and COVID-19: We can and should do better](#). *J Clin Nurs*. 2020 May 11;29(15-16):2758-2759.

Kuchinad K, Sharma R, Isenberg SR, Hamayel NAA, Weaver SJ, Zhu J, Hannum SM, Kamal AH, Improving AM, Lorenz KA, Ailon J, Dy SM. [Perceptions of Facilitators and Barriers to Measuring and Improving Quality in Palliative Care Programs](#). *Am J Hosp Palliat Care*. 2020 Apr 27.

Lee JT, Polsky D, Fitzsimmons R, Werner RM. [Proportion of Racial Minority Patients and Patients With Low Socioeconomic Status Cared for by Physician Groups After Joining Accountable Care Organizations](#). *JAMA Netw Open*. 2020 May 1;3(5):e204439.

Leff B, Sheehan O, Bhatnagar S, Harrison KL, Barrows RC, Ritchie CS. [To What Extent Are the Centers for Medicare & Medicaid Services 2019 MIPS Quality Measures Inclusive of Home-Based Medical Care?](#) *Ann Intern Med*. 2020 May 19.

Liu C, Badana ANS, Burgdorf J, Fabius CD, Roth DL, Haley WE. [Systematic Review and Meta-Analysis of Racial and Ethnic Differences in Dementia Caregivers' Well-Being](#). *Gerontologist*. 2020 Apr 9.

Nkimbeng M, Roberts L, Thorpe RJ Jr, Gitlin LN, Delaney A, Tanner EK, Szanton SL. [Recruiting Older Adults With Functional Difficulties Into a Community-Based Research Study: Approaches and Costs](#). *J Appl Gerontol*. 2020 Jun;39(6):644-650.

Roth DL, Haley WE, David Rhodes J, Sheehan OC, Huang J, Blinka MD, Yuan Y, Irvin MR, Jenny N, Durso P, Cushman M, Walston JD, Howard VJ. [Transitions to family caregiving: enrolling incident caregivers and matched non-caregiving controls from a population-based study](#). *Aging Clin Exp Res*. 2019 Oct 19.

Ryskina KL, Yuan Y, Polsky D, Werner RM. [Hospitalist Vs. Non-Hospitalist Care Outcomes and Costs for Medicare Beneficiaries Discharged to Skilled Nursing Facilities in 2012-2014](#). *J Gen Intern Med*. 2020 Jan;35(1):214-219.

Schoenborn NL, Massare J, Park R, Boyd CM, Choi Y, Pollack CE. [Assessment of Clinician Decision-making on Cancer Screening Cessation in Older Adults With Limited Life Expectancy](#). *JAMA Netw Open*. 2020 Jun 1;3(6):e206772.

Wagner Z, Montoy JCC, Drabo EF, Dow WH. [Incentives Versus Defaults: Cost-Effectiveness of Behavioral Approaches for HIV Screening](#). *AIDS Behav*. 2020;24(2):379-386.

Roger C. Lipitz Center for Integrated Health Care

About Us

Center News

Research Projects

Roger C. Lipitz Center for Integrated Health Care, The Johns Hopkins Bloomberg School of Public Health
624 N. Broadway Rm. 692, Baltimore, MD 21205 | 410-614-7910
Visit our [Website](#) | Follow us on [Twitter](#) | View [Previous Issues](#) 2020 ©

Share this email:



Manage your preferences | [Opt out](#) using TrueRemove®
Got this as a forward? [Sign up](#) to receive our future emails.
View this email [online](#).

624 North Broadway, Room 692
Baltimore, MD | 21205 US

This email was sent to
To continue receiving our emails, add us to your address book.

emma

[Subscribe](#) to our email list.