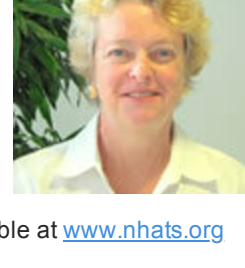


**Summer 2019**

**FACULTY SPOTLIGHT**

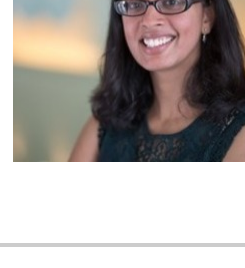
This quarter we spotlight **Judith D. Kasper, PhD**, Professor of Health Policy and Management. Dr. Kasper has been a longstanding faculty member in the Department of Health Policy and Management. She is internationally recognized for survey methodology expertise in aging and disability, and in health services research relating to long-term services and supports. Dr. Kasper has led the National Health and Aging Trends Study (NHATS) since its inception. This study is funded by the National Institute on Aging to provide a platform for research on disability trends and trajectories in late life. In-person interviews are conducted annually with a nationally representative sample of over 8,000 older adults. Eight waves of annual data (2011-2018) are now available at [www.nhats.org](http://www.nhats.org) with additional waves of annual data collection planned through 2023.



**RESEARCH FINDINGS**

**State Efforts to Lower Drug Prices Paid by Private Insurers**

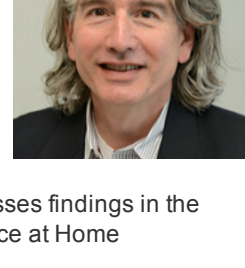
In a *JAMA* viewpoint, **Aditi Sen**, **Amber Willink** and **Gerard Anderson** describe three strategies states are using to contain drug prices: rate regulation, alternative payment models, and promoting competition. They discuss how federal policy-makers can learn from state efforts to improve patient access to affordable prescription drugs. [Read More.](#)



A companion *JAMA* viewpoint by **Jane Horvath** and **Gerard Anderson** discusses how states have contained prescription drug costs through drug importation and payment reform, with implications for federal policy. [Read More.](#)

**Using Quality to Shine a Light on Homebound Care**

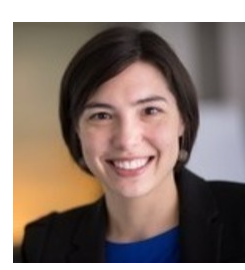
In a *NEJM Catalyst* article, **Christine S. Ritchie** and **Bruce Leff** discuss the arc of their past, present, and future work to develop and advance the use of quality measures for Home-Based Medical Care. So far, they have established a National Home-Based Primary Care and Palliative Care Registry, a learning network, and a national data repository to address the unique needs of home-bound persons. [Read More.](#)



A related editorial in *Journal of the American Geriatrics Society* by **Bruce Leff**, **Andrew Lasher**, and **Christine Ritchie** summarizes new evidence suggesting greater benefit of embedding Hospital at Home within integrated care and discusses findings in the context of the Center for Medicare and Medicaid Innovation (CMMI) Independence at Home demonstration. [Read More.](#)

**Redesigning Medicare to Work for Everyone**

In a *NEJM Catalyst* article, **Cathy Schoen**, **Karen Davis**, and **Amber Willink** analyze gaps in the traditional Medicare design that leave beneficiaries exposed to burdensome costs without supplemental coverage. The authors describe approaches to expand access and choice. [Read More.](#)



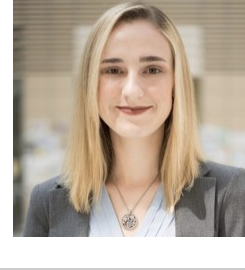
In a related paper in *INQUIRY*, **Amber Willink** uses the 2016 Medicare Current Beneficiary Survey linked to Medicare Advantage plan benefit data to examine enrollment levels in plans that cover dental, vision, and/or hearing services. [Read More.](#)

**Engaging Care Partners in Breast Cancer Care and Communication**

In *Breast Cancer Research and Treatment*, **Jennifer L. Wolff**, **Jennifer Aull**, **Diane Echavarría**, **JaAlah-Ai Heughan**, **Kimberley T. Lee**, **Roisin M. Connolly**, **John H. Fetting**, **Daniela Jelovac**, **Katie Papathakis**, **Carol Riley**, **Vered Stearns**, **Elissa Thorner**, **Nelli Zafman**, **Howard P. Levy**, **Sydney M. Dy**, and **Antonio C. Wolff** report short-term effects of a self-administered patient-family communication intervention to clarify care partner roles, establish a shared visit agenda, and facilitate patient portal access. Findings show 3 in 4 patients elected to share their electronic health information with a family care partner, and care partners who obtained their own access often used it for viewing information rather than sending direct messages to clinicians. [Read More.](#)

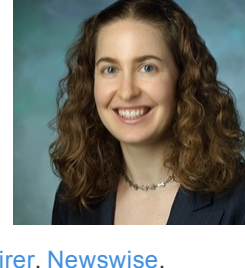
**In Support of Family Caregivers: A Snapshot of Five States**

A Milbank Memorial Fund and John A. Hartford Foundation funded report by **Jennifer Aull**, **Julia Burgdorf**, and **Jennifer L. Wolff** describes how five politically and geographically diverse states (HI, ME, MN, TN, WA) are advancing efforts to support family caregivers of older adults. Findings suggest the importance of increasing awareness, visibility, and assessment of caregivers, and the value of tailoring approaches to each states' unique context. The report discusses policy implications for efforts in developing state and national strategies. [Read More.](#)



**Medicare Beneficiaries' Exposure to Fraud And Abuse Perpetrators**

Study by **Lauren Hersch Nicholas**, **Jodi Segal**, **Caroline Hanson**, **Kevin Zhang** and **Matthew D. Eisenberg** in *Health Affairs* analyzes characteristics of patients exposed to medical providers who were later banned as fraud and abuse perpetrators. The identified medical providers treated more than 1.2 million Medicare beneficiaries and received more than \$630 million in Medicare payments between 2012 and 2015. Beneficiaries exposed to fraud and abuse perpetrators were more likely to be disabled, non-White, and low-income Medicaid recipients. [Read More.](#)



This article was highlighted by several news outlets including: [Philadelphia Inquirer](#), [Newswise](#), and [EurekAlert](#).

**The True Outcomes of Geriatric Trauma—If We Do Not Count Them, We Will Never Know**

Invited commentary in *JAMA Surgery* from **Vanessa P. Ho**, **Lisa Reider**, and **Elliott R. Haut** discusses challenges and opportunities in geriatric trauma care. In older adults with multimorbidity, trauma may be a manifestation of declining health. As older adults are often excluded from existing registries, there is a missed opportunity for quality improvement initiatives in a growing segment of the trauma population. [Read More.](#)

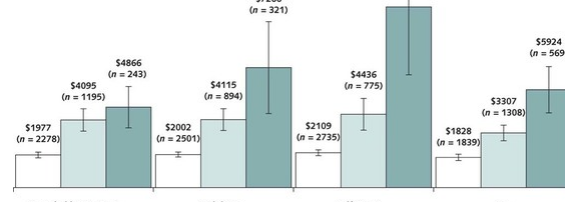


**NEWS FROM THE NATIONAL HEALTH AND AGING TRENDS STUDY**

**The eighth round of NHATS has been released, affording annual data from 2011-2018, with three waves of the National Study of Caregivers: 2011, 2015, and 2017. Details are available at [www.nhats.org](http://www.nhats.org). Nearly 3,000 users have registered to access NHATS data, from which >200 peer-reviewed articles have been published, including these:**

**Medicare Spending and the Adequacy of Support With Daily Activities in Community-Living Older Adults With Disability: An Observational Study**

In *Annals of Internal Medicine*, **Jennifer L. Wolff**, **Lauren H. Nicholas**, **Amber Willink**, **John Mulcahy**, **Karen Davis**, and **Judith D. Kasper**, find Medicare spending is significantly higher among community-living older adults with disability who have unmet needs in mobility and self-care activities. Study findings suggest better support with care needs could offset Medicare spending. [Read More.](#)



This article was covered by [Newswise](#).

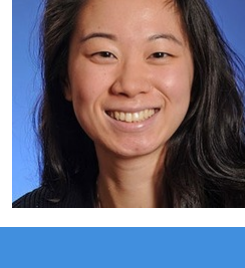
**Before Hospice: Symptom Burden, Dementia, and Social Participation in the Last Year of Life**

In the *Journal of Palliative Medicine*, **Halima Amjad**, **Scott H. Snyder**, **Jennifer L. Wolff**, **Esther Oh**, and **Quincy M. Samus** find higher symptom burden among older adults approaching end of life with dementia, as compared with those who do not have dementia. Study findings support the earlier emphasis on palliative care and quality of life. [Read More.](#)



**Comparing Survey-Based Frailty Assessment to Medicare Claims in Predicting Health Outcomes and Utilization in Medicare Beneficiaries**

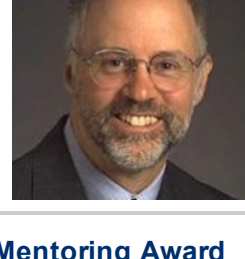
In the *Journal of Aging and Health*, Health Services Research & Policy doctoral student **Shannon Wu** and coauthors **John Mulcahy**, **Judith D. Kasper**, **Hong J. Kan**, and **Jonathan P. Weiner** compare claims- and survey-based models for predicting hospitalization, functional impairment, and death among older adults. Study results indicate that claims-based models appear to be as discriminate as survey-based models. [Read More.](#)



**NEWS & UPDATES**

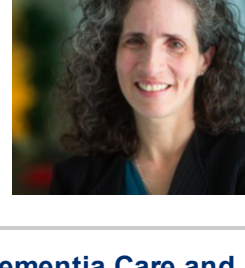
**Gerard Anderson Receives Award for Distinction in Faculty Mentoring**

**Gerard Anderson** received the 2018-2019 Dean's Award for Distinction in Faculty Mentoring. This award is conferred in recognition of a sustained commitment to excellence in fostering the scientific, academic and/or career development of fellow faculty members at the Johns Hopkins Bloomberg School of Public Health. [Read More.](#)



**Sydney M. Dy Named to CMS Technical Expert Panel, Receives Mentoring Award**

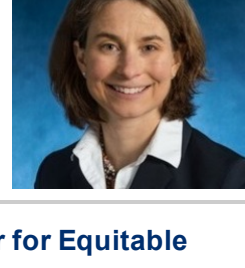
**Sydney M. Dy** was named Co-Chair of a Technical Expert Panel convened by the Center for Medicare and Medicaid Services (CMS) to develop Community Palliative Care Quality Measures in accordance with the Medicare Access and Chip Reauthorization Act of 2015 (MACRA). [Read More.](#)



Dr. Dy also received the Advising, Mentoring and Teaching Recognition Award for Outstanding Service from the Johns Hopkins Bloomberg School of Public Health. [Read More.](#)

**Jennifer L. Wolff Named Co-Chair of NIA Research Summit on Dementia Care and Services**

**Jennifer L. Wolff**, Director of the Lipitz Center for Integrated Health Care, was named Co-Chair of the 2020 National Institute on Aging Research Summit on Dementia Care and Services. The 2020 Summit follows the first National Research Summit on Care, Services, and Supports for Persons with Dementia and Their Caregivers in 2017 (also known as the Dementia Care & Caregiving Summit) to set research priorities related to dementia care and services. [Read More.](#)



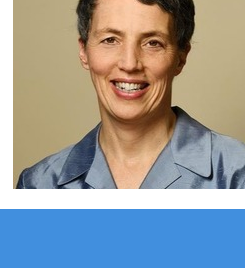
**Mani Keita Awarded Dissertation Grant from Washington Center for Equitable Growth**

Health Services Research & Policy doctoral student **Mani Keita** was recently awarded one-year dissertation grant from the Washington Center for Equitable Growth for her proposal titled, "Examining the Relationship between Caregiving and Work Productivity Loss Among Employed Family Caregivers of Older Adults." Congratulations, Mani!



**CAPABLE Model Unanimously Recommended for Payment in Fee-for-Service Medicare**

On June 17th, the Physician-Focused Payment Model Technical Advisory Committee (PTAC) voted 7-0 to recommend a "social care model" relating to the [Community Aging in Place - Advancing Better Living for Elders \(CAPABLE\)](#) model for consideration of payment in fee-for service Medicare. The CAPABLE model has consistently been found to improve function in low-income older adults with disabilities. [Read More.](#)



**SELECT RECENT PUBLICATIONS**

Abu Al Hamayel N, Isenberg SR, Sixon J, Smith KC, Pitts SI, **Dy SM**, Hannum SM. [Preparing Older Patients With Serious Illness for Advance Care Planning Discussions in Primary Care](#). J Pain Symptom Manage. 2019 May 7.

Adelberg M, Frakt A, **Polsky D**, Strollo MK. [Improving provider directory accuracy: can machine-readable directories help?](#) Am J Manag Care. 2019 May;25(5):241-245.

Bai G, Chanmugam A, Suslow VY, **Anderson GF**. [Air Ambulances With Sky-High Charges](#). Health Aff (Millwood). 2019 Jul;38(7):1195-1200.

**Green AR**, Lee P, Reeve E, **Wolff JL**, Chen CCG, Krizan R, **Boyd CM**. [Clinicians' Perspectives on Barriers and Enablers of Optimal Prescribing in Patients with Dementia and Coexisting Conditions](#). J Am Board Fam Med. 2019 May-Jun;32(3):383-391.

Nkimbeng M, Cudjoe J, Turkson-Ocran RA, Commodore-Mensah Y, Thorpe RJ Jr, **Szanton SL**. [Disparities in the Prevalence and Correlates of Disability in Older Immigrants in the USA: a Systematic Review of the Literature](#). J Racial Ethn Health Disparities. 2019 Jun;6(3):552-562.

Ornstein KA, **Wolff JL**, Bollens-Lund E, Rahman OK, Kelley AS. [Spousal Caregivers Are Caregiving Alone in The Last Years Of Life](#). Health Aff (Millwood). 2019 Jun;38(6):964-972.

Parker LJ, Gaugler JE, **Samus Q**, Gitlin LN. [Adult Day Service Use Decreases Likelihood of a Missed Physician's Appointment Among Dementia Caregivers](#). J Am Geriatr Soc. 2019 Jun 20.

**Schoenborn NL**, **Boyd CM**, Lee SJ, Cayea D, Pollack CE. [Communicating About Stopping Cancer Screening: Comparing Clinicians' and Older Adults' Perspectives](#). Gerontologist. 2019 May 17;59(Supplement\_1):S67-S76.

**Schoenborn NL**, **Huang J**, **Boyd CM**, Nowak S, Pollack CE. [Who Orders Screening Mammograms in Older Women with Limited Life Expectancy?](#) J Gen Intern Med. 2019 May 14.

Spillman BC, Freedman VA, **Kasper JD**, **Wolff JL**. [Change over time in caregiving networks for older adults with and without dementia](#). J Gerontol B Psychol Sci Soc Sci. 2019 May 18.

