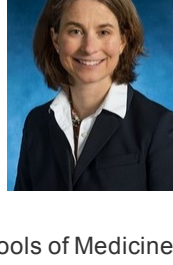


**POLICY-DIRECTED RESEARCH TO IMPROVE CARE FOR PERSONS WITH COMPLEX HEALTH NEEDS**

**Summer 2018**

**LETTER FROM THE DIRECTOR**

It is an honor to have the opportunity to serve as the new Director of the Roger C. Lipitz Center for Integrated Health Care and the third Eugene and Mildred Lipitz Professor, succeeding **Karen Davis, PhD**, who served as Center Director from 2013-2017 and remains involved in Center activities. Many of you already know me, but for those of you who don't, I have been on faculty in the Department of Health Policy and Management at the Johns Hopkins Bloomberg School of Public Health since 2003. My work focuses on strategies to improve care delivered to persons with complex health needs and their family members. The Lipitz Center seeks to conduct and translate research into practice and policy to improve the quality of life and quality of care for persons with complex health needs. In this newsletter, we share recent news about work underway at the Lipitz Center and partner Centers in the Schools of Medicine and Nursing.

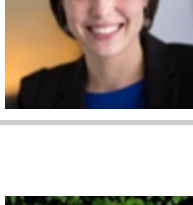


**Jennifer Wolff, PhD**  
**Eugene and Mildred Lipitz Professor**  
**Roger C. Lipitz Center for Integrated Health Care (@LipitzCenter)**  
**Johns Hopkins Bloomberg School of Public Health**

**FINDINGS**

**The Promises and Pitfalls of the CHRONIC Care Act**

The CHRONIC Care Act will allow insurance companies offering Medicare Advantage plans to pay for non-medical supplementary benefits to prevent an illness or injury. **Amber Willink** and **Eva DuGoff** co-authored a perspective in the *New England Journal of Medicine* describing implications of the Act. [Read More.](#)



**Communicating in Home Health Care**

Home health plays a critical role in caring for persons residing in the community. The primary form of communication between clinicians and home health nurses is, well, a form—CMS Form 485. **Cynthia Boyd** led a study in *Annals of Internal Medicine* with coauthors **Bruce Leff**, **Julia Bellatoni**, **Navpreet Rana**, **Jennifer Wolff**, **David Roth**, **Kim Carl**, and **Orla Sheehan** to assess whether the current approach to communicating meaningfully engages clinicians. [Read More.](#)



**Lessons From Maryland's Community First Choice Program**

Two companion analyses describe recent efforts in Maryland to expand access to home & community-based long-term services through Community First Choice. A qualitative study in the *Journal of Applied Gerontology* led by Ph.D. candidate **Julia Burgdorf** suggests that CFC in Maryland has been financially feasible, enhanced the personal care workforce, and supported a more equitable approach to personal care services. A *Commonwealth Fund* issue briefed by **Karen Davis** finds that paid personal care services largely supplement rather than replace informal and family caregiver support. Coauthors include **Jennifer Wolff**, **Amber Willink** and Hilltop Institute's **Ian Stockwell**, **Kaitlyn Whiton**, and **Cynthia Woodcock**. [Read More.](#)



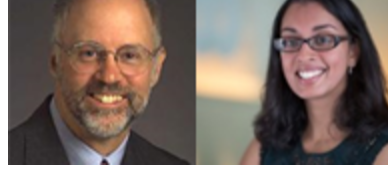
**SNAP and Hospital Utilization Among Older Adults in Maryland**

A study led by Johns Hopkins School of Nursing faculty **Laura Samuel** and co-authored by **Sarah Szanton**, **Rachel Cahill**, **Jennifer Wolff**, **Pinchuan Ong**, **Ginger Zielinskie**, and **Charles Betley** suggests that participation in the Supplemental Nutrition Assistance Program (SNAP) may reduce hospitalizations and health care costs among older adults. [Read More.](#)



**Drug Pricing and Pharmacy Benefit Manager Incentives**

*Annals of Internal Medicine* article co-authored by **Ge Bai**, **Gerard Anderson** and **Aditi Sen** examines how pharmacy benefit managers, the companies that manage the pharmaceutical side of health insurance companies, affect drug pricing. Authors suggest that addressing pharmacy benefit managers' financial incentives and business practices could help lower costs. [Read More.](#)



**Multisectoral Impact of Pressure Injuries**

**William Padula** and **Peter Pronovost** co-authored a *BMJ* perspective discussing system strategies to avoid pressure injuries. The perspective suggests alternative payment models and changes to infrastructure and technologies that would encourage prevention and improve care for patients. [Read More.](#)



**Patient and Family Engagement for Improving Medication Safety**

A systematic review co-authored by **Julia Kim**, **Catalina Suarez-Cuervo**, **Zackary Berger**, **Joy Lee**, **Jessica Gayleard**, **Carol Rosenberg**, **Natalia Nagy**, **Kristina Weeks**, and **Sydney Dy** in *Patient* evaluates patient and family engagement strategies to improve medication safety. [Read more.](#)

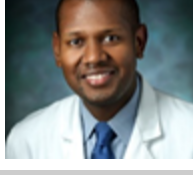


**NEWS FROM THE NATIONAL HEALTH AND AGING TRENDS STUDY**

**Six rounds of NHATS (2011-2016) and two waves of the National Study of Caregivers (2011 and 2015) are available at [www.nhats.org](http://www.nhats.org). Round 7 of NHATS will be released this Summer and NSOC III will be released this Fall. Nearly 3,000 users have registered to access NHATS data and more than 150 peer-reviewed articles have been published, including:**

**Social Isolation Among Older Adults**

A study in the *Journals of Gerontology* led by **Thomas Cudjoe** and co-authored by **David Roth**, **Sarah Szanton**, **Jennifer Wolff**, **Cynthia Boyd**, and **Roland Thorpe Jr.** uses NHATS to report on social isolation among older adults. The study finds social isolation to be a highly prevalent risk, which is important as isolation can be modifiable. [Read more.](#)



**Declines in Dementia Prevalence**

A study co-authored by **Vicki Freedman**, **Brenda Spillman**, **Brenda Plassman**, and Principal Investigator of NHATS **Judith Kasper** in the *Journal of Gerontology, Series B*, finds that the United States is expected to experience short-term declines in dementia prevalence due to age and educational factors, but long-run demographic trends may reverse this course. [Read more.](#)



**Dementia Underdiagnosis in Older Adults**

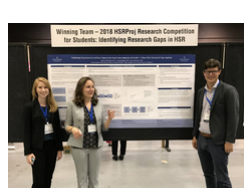
A study in *JGIM* led by **Halima Amjad** and co-authored by **David Roth**, **Orla Sheehan**, **Constantine Lyketsoos**, **Jennifer Wolff**, and **Quincy Samus** using NHATS reports as many as half of older adults living with dementia have never been formally diagnosed or are unaware of their diagnosis. [Read more.](#)



**MEETINGS AND COLLABORATIONS**

**Academy Health, ARM 2018**

HSR&P doctoral students **Mani Keita**, **Dolapo Fakeye**, **Sarah Gensheimer**, **Julia Burgdorf**, and **Zach Predmore** presented their research at the ARM. **Gensheimer**, **Burgdorf**, & **Predmore's** poster "Validating Population-Level Data Sources for Social Determinants of Health: A Three-Part Research Gap Analysis" won the student competition. **Karen Davis** spoke in Honor of Uwe Reinhardt: Building on His Health Research & Policy Legacy. **Jennifer Wolff** presented findings from The Same Page Trial (R21AG049967). **Sarah Szanton** presented findings from the CAPABLE Trial (R01AG040100).



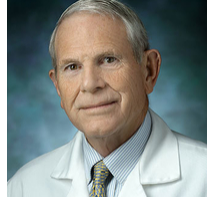
**American Geriatrics Society, Annual Scientific Meeting 2018**

**Bruce Leff**, Director of the Center for Transformative Geriatric Research, delivered the Henderson State-of-the-Art Lecture at the AGS 2018 Annual Scientific Meeting. His lecture, titled "Look Homeward, Medicine!" describes services and models of care that are being increasingly geared towards home-based medical care for America's aging population.



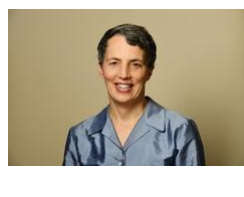
**John A. Hartford Foundation Board of Trustees Meeting, 2018**

The Division of Geriatric Medicine and Gerontology hosted the John A. Hartford Foundation Board of Trustees meeting. **John R. Burton**, co-director of the Johns Hopkins Geriatric Education Center Consortium was honored with the inaugural Board of Trustees Award for his decades of leadership in geriatrics. Burton guided the Johns Hopkins Division of Geriatric Medicine for nearly thirty-five years; major programs developed include the Elder House Call program, Hospital at Home, and the Program for All-Inclusive Care of the Elderly (PACE).



**Sarah Szanton Named Endowed Professor in Health Equity & Social Justice**

The Johns Hopkins School of Nursing named **Sarah Szanton** the inaugural Endowed Professor in Health Equity and Social Justice. Dr. Szanton directs the JHSON Center for Innovative Care in Aging. Her work with low-income older adults and vulnerable populations in Baltimore has been highly influential in shaping national understanding of how social determinants influence health.



**Recent Grants**

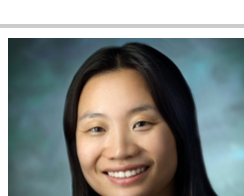
**Lauren Nicholas awarded 5-Year R01 for End-of-Life Decisions for Older Adults with Dementia.**

**Lauren Nicholas** was awarded a 5-year R01 Grant (1R01AG059205) for understanding and respecting end-of-life treatment preferences among older adults with Alzheimer's Disease and Related Dementias. The NIA grant offers a rare opportunity to examine relationships between cognitive status and end-of-life treatment preferences, and to develop advance care planning language, practices and policies that more effectively engage persons with ADRD and their surrogates.



**Nancy Schoenborn awarded Beeson Career Development Award.**

The 4-year NIA award is focused on helping clinicians make appropriate cancer screening recommendations to older adults with limited life expectancy. Primary mentors are **Cynthia Boyd** and **Craig Pollack**, and additional advisors include **Jill Marsteller**, **Kay Dickersin**, **Qian-Li Xue**, **Harold Lehmann**, and **Antonio Wolff**.



**Jennifer Wolff begins policy project with funding from Milbank Memorial Fund.**

With support from the Milbank Memorial Fund, **Jennifer Wolff**, **Julia Burgdorf**, and **Jennifer Auful** will conduct a project to examine best practices in state policies and programs to support family caregivers.

**SELECT RECENT PUBLICATIONS**

- Dean LT, Schmitz KH, Frick K, Nicholas LH, Zhang Y, Subramanian SV, Visvanathan K. Consumer credit as a novel marker for health and economic burden in a diverse population of breast cancer survivors. *J Cancer Surviv.*
- Gresham G, Dy SM, Zipunnikov V, Browner IS, Studenski SA, Simonsick EM, Ferrucci L, Schrack JA. Fatigability and Endurance Performance in Adults with a History of Cancer: Analyses from the Baltimore Longitudinal Study of Aging. *Cancer.*
- Liljenquist D, Bai G, Anderson GF. Addressing Generic-Drug Market Failures - The Case for Establishing a Nonprofit Manufacturer. *N Engl J Med.*
- McQueen RB, Napula WV, Campbell JD. A call for open-source cost-effectiveness analysis. *Ann Intern Med.*
- Mroz TM, Meadow A, Colantuoni J, Leff B, Wolff JL. Home Health Agency Characteristics and Quality Outcomes for Medicare Beneficiaries With Rehabilitation-Sensitive Conditions. *Arch Phys Med Rehabil.*
- Pherson E, Roth J, Nkimbeng M, Boyd C, Szanton SL. Ensuring Safe and optimal medication use in older community residents: a collaboration between a nurse and a pharmacist. *Geriatr Nurs.* 2018
- Roth DL, Brown SL, Rhodes JD, Haley WE. Reduced mortality rates among caregivers: Does family caregiving provide a stress-buffering effect? *Psychology and Aging.*
- Szanton SL, Alfonso YN, Leff B, Guralnik J, Wolff JL, Stockwell I, Gitlin LN, Bishai D. Medicaid Cost Savings of a Preventive Home Visit Program for Disabled Older Adults. *J Am Geriatr Soc.*
- Wolff JL, Kim VS, Mintz S, Stamez R, Griffin JM. An environmental scan of shared access to patient portals. *J Am Med Inform Assoc.*
- Zhou S, Holscher CM, Massie AB, Segev DL, Nicholas LH. Correlation between Kidney Transplant Outcome Metrics and Waitlist Metrics. *Transplantation.*

