

CPHIT Newsletter: Winter 2021

The Johns Hopkins Center for Population Health IT (CPHIT) focuses on applying digital data sources including, electronic health records, health insurance claims, social determinant of health data, to the measurement and improvement of the health of communities and populations.

If you have questions about the stories or publications appearing herein, or would like to learn more on any of the projects or activities described please contact us at: ltansky@jhu.edu

Latest Articles by CPHIT Faculty and Staff

[Performance of a Predictive Model versus Prescription-Based Thresholds in Identifying Patients at Risk of Fatal Opioid Overdose](#). 2021. Substance Use & Misuse.

[Early relaxation of community mitigation policies and risk of COVID-19 resurgence in the United States](#). 2021. Preventive Medicine.

Review a full list of CPHIT Publications [here](#)



Congrats!

Hadi Kharrazi, MD, PhD, FAMIA, has been named Associate Editor of JAMIA Open. JAMIA Open is the official open-access journal of the American Medical Informatics Association

(AMIA). Kharrazi will start his role as Associate Editor in Jan 2021.

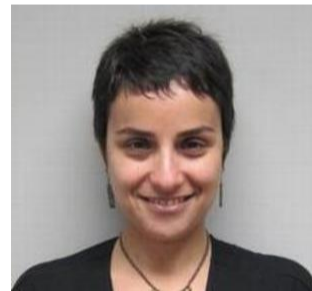
New CPHIT Research Grants:

- A new AHRQ grant entitled: Developing and Assessing the Validity of Claims-based Indicators of Frailty & Functional Disabilities and Testing their Use in Other Data (EHRs and linked EHR-claims). Together with The Johns Hopkins Armstrong Institute for Patient Safety and Quality.
- A new FDA Grant entitled: "Disparities in Type 2 Diabetes Adverse Drug Events (ADEs) - Assessing disparities in occurrence and outcomes of type 2 diabetes ADEs in minority populations using real world administrative claims and EHRs". Through the JHU Center of Excellence in Regulatory Science and Innovation (CERSI).

Stay tuned for results and publications! For more information, contact CPHIT Center Coordinator, Elyse Lasser: elasser1@jhu.edu

Team Member Spotlight: Elham Hatef

Elham Hatef, MD, MPH earned her medical degree from Tehran University of Medical Sciences, in Tehran, Iran, and her Master in Public Health from Johns Hopkins Bloomberg School of Public Health (JHBSPH). Dr. Hatef completed a preliminary year in Internal Medicine at Yale-affiliated Griffin Hospital in Connecticut and the Preventive Medicine Residency and Chief Residency at JHBSPH. She then completed the Clinical Informatics Practice Pathway at JHBSPH. Dr. Hatef is board certified in Preventive Medicine-Public Health and Clinical Informatics.



She joined the Center for Population Health IT (CPHIT) where she conducts a number of projects in preventive medicine and population health with a focus on social determinants of health, using health information technology and Big Data. She also serves as the academic director of the Johns Hopkins General Preventive Medicine Residency Program.

See Elham's JHSPH faculty page [here](#).



Jonathan Weiner's HIMSS TV Interview

Dr. Weiner did a live interview on "HIMSS TV" regarding role of of Data Science (AI and Machine Learning) in Population

Health and Health Care: [See it here](#).

[Explore the CPHIT Website](#)

Share this email:



[Manage](#) your preferences | [Opt out](#) using TrueRemove™

Got this as a forward? [Sign up](#) to receive our future emails.

View this email [online](#).

615 N. Wolfe Street
Baltimore, MD | 21205 US

This email was sent to .
To continue receiving our emails, add us to your address book.

emma

[Subscribe](#) to our email list.