

# Organizational Influences in Healthcare Delivery at the National Cancer Institute

Erica S. Breslau, PhD, MPH

Sallie J. Weaver, PhD, MHS

Josh Medel, BS

Health Systems & Interventions Research Branch

Healthcare Delivery Research Program



# Roadmap

1. HDRP: Mission & organization
2. Why organizational research?
3. What have we done & learned?
4. Questions & discussion

# Who We Are & Organizational Structure

Division of Cancer Control and Population Sciences (DCCPS)

*Office of Cancer Survivorship  
Implementation Science*

**Healthcare  
Delivery  
Research  
Program (HDRP)**

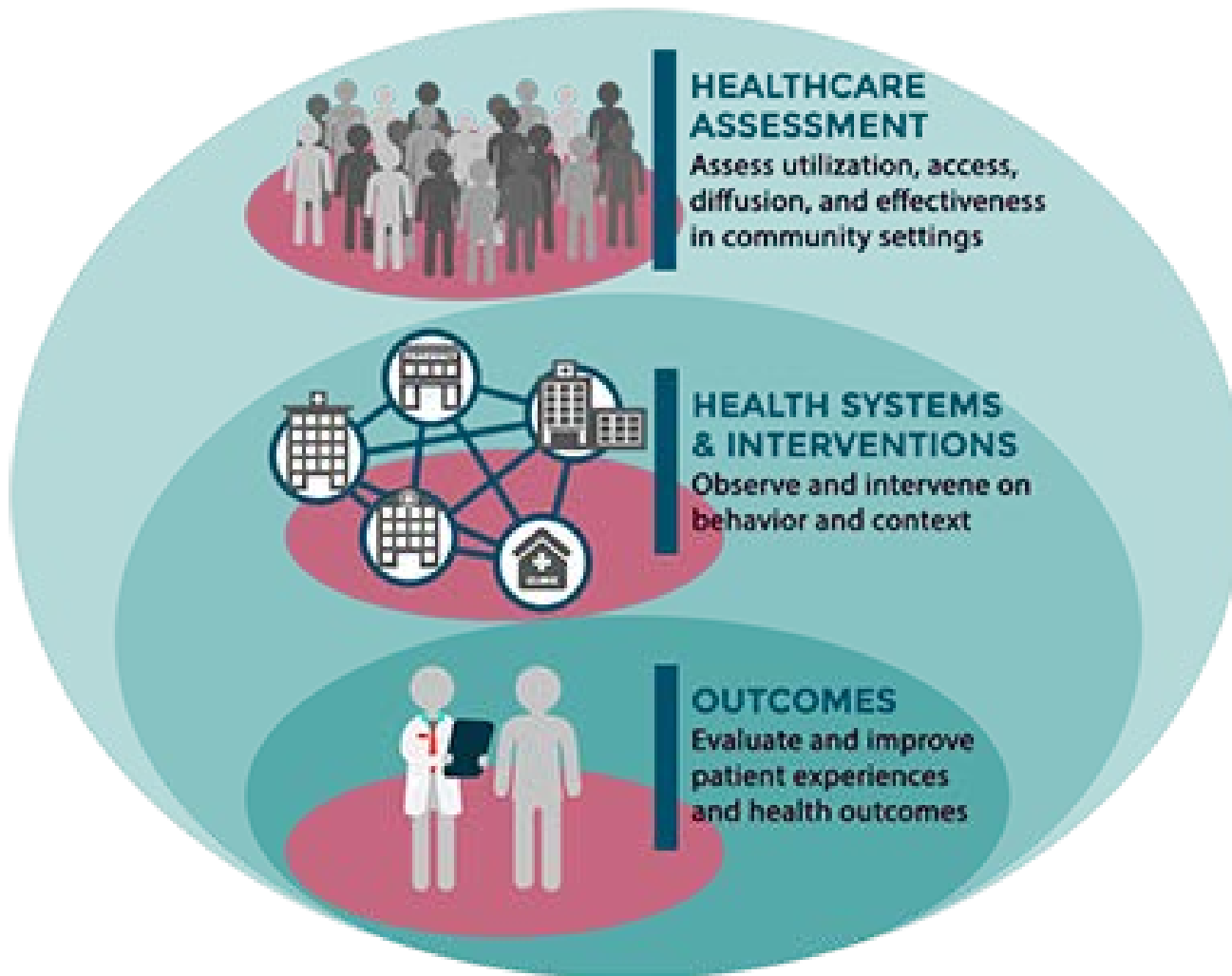
**Behavioral  
Research  
Program (BRP)**

**Epidemiology  
and Genomics  
Research  
Program (EGRP)**

**Surveillance  
Research  
Program (SRP)**

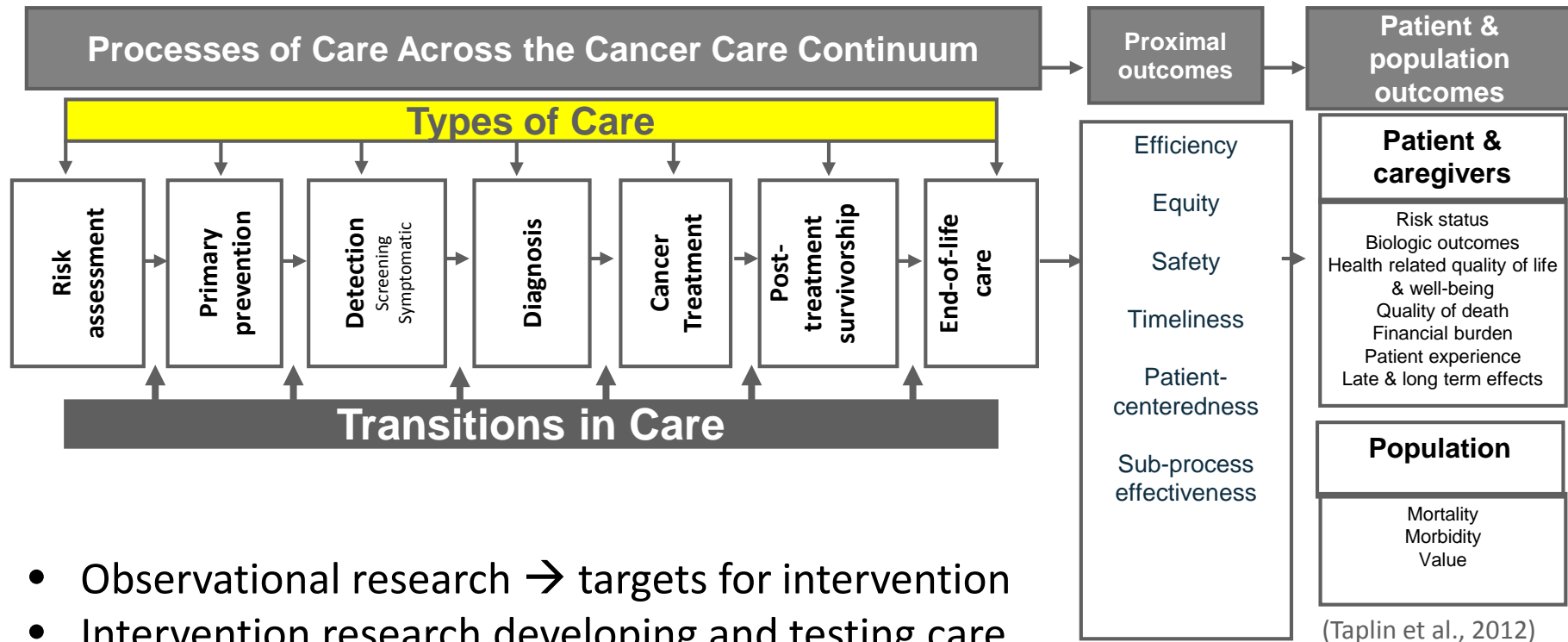
# Healthcare Delivery Research Program (HDRP)

Advancing innovative research to improve the delivery of cancer-related care



<https://healthcaredelivery.cancer.gov>

# Types of research HDRP supports



- Observational research → targets for intervention
- Intervention research developing and testing care delivery interventions
- Patterns of care studies
- New measures and metrics

# Health systems & interventions research branch (HSIRB)

**Mission:** Advance observational and intervention research on structural, organizational, social, and behavioral factors that influence the delivery of cancer care -- from early detection through end of life

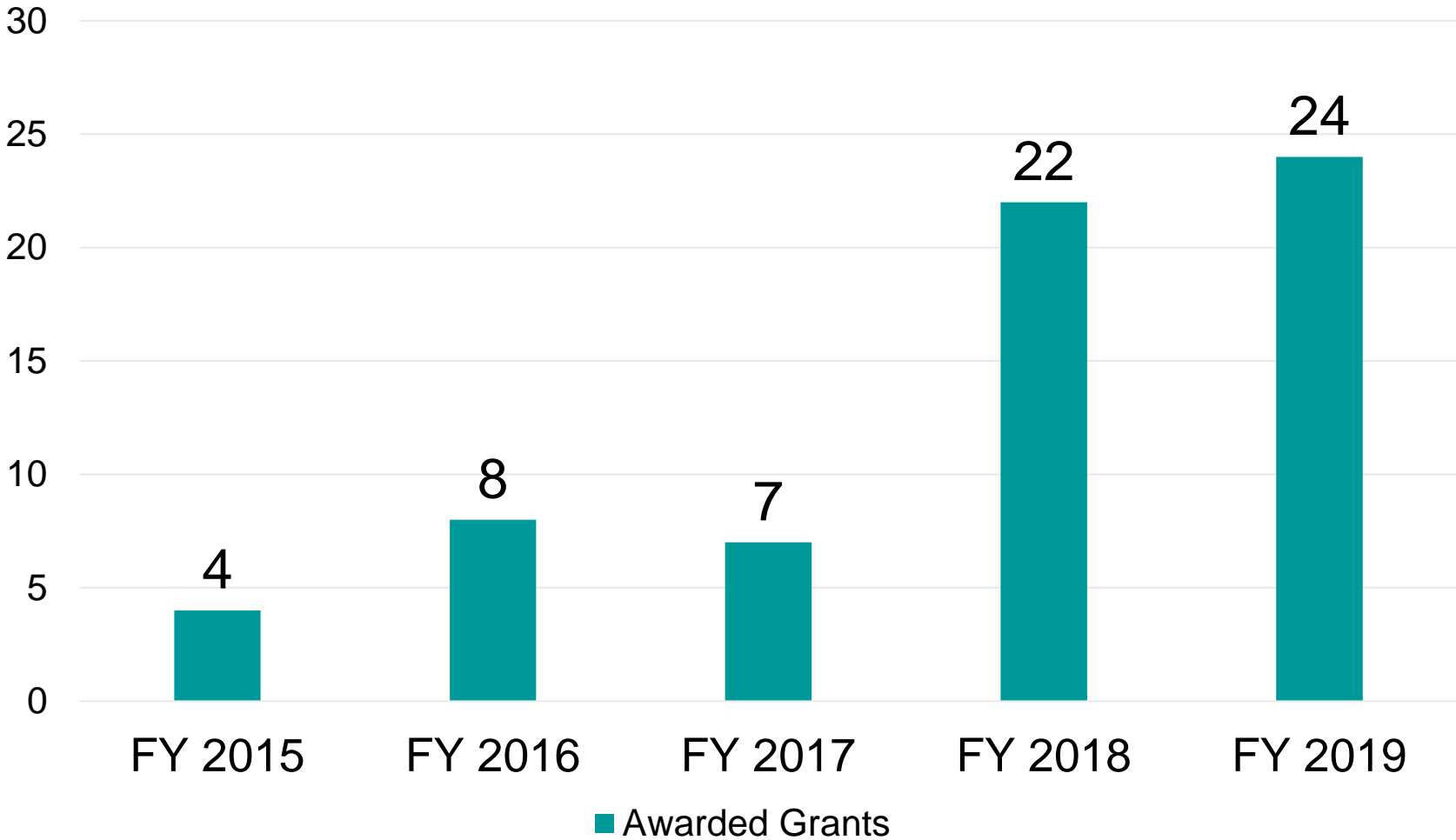
Observational & interventional research addressing:

- Care coordination & teamwork processes
- Team-based approaches to cancer care
- Transitions in care
- Shared decision making (e.g., HPV vaccination, genetic testing, long term surveillance)
- Multi-level interventions that improve care delivery & patient outcomes
- Interventions leveraging health information technology (HIT) or testing innovative HIT tools

# Four tools HDRP uses to support research

- **Funding** research through grants, RFAs, etc.
- **Supporting** research networks
- **Convening** meetings with extramural research community and key stakeholders
- **Developing** and housing large data resources and measurement tools

# Awarded Grants focused on Healthcare Organizational Structure and/or Process (FY15-FY19)

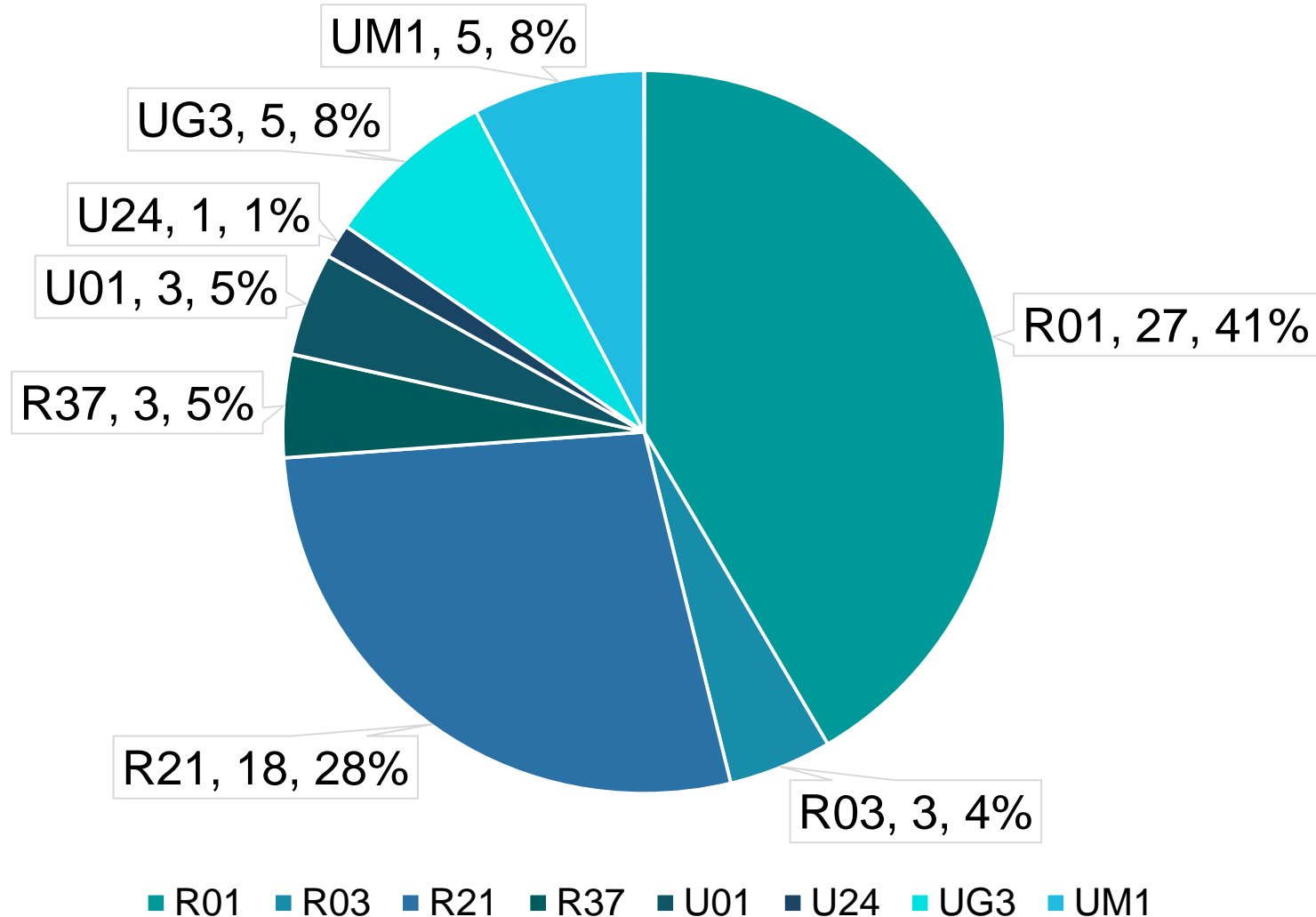


\*R-mechanism & U-mechanism only, held by HDRP



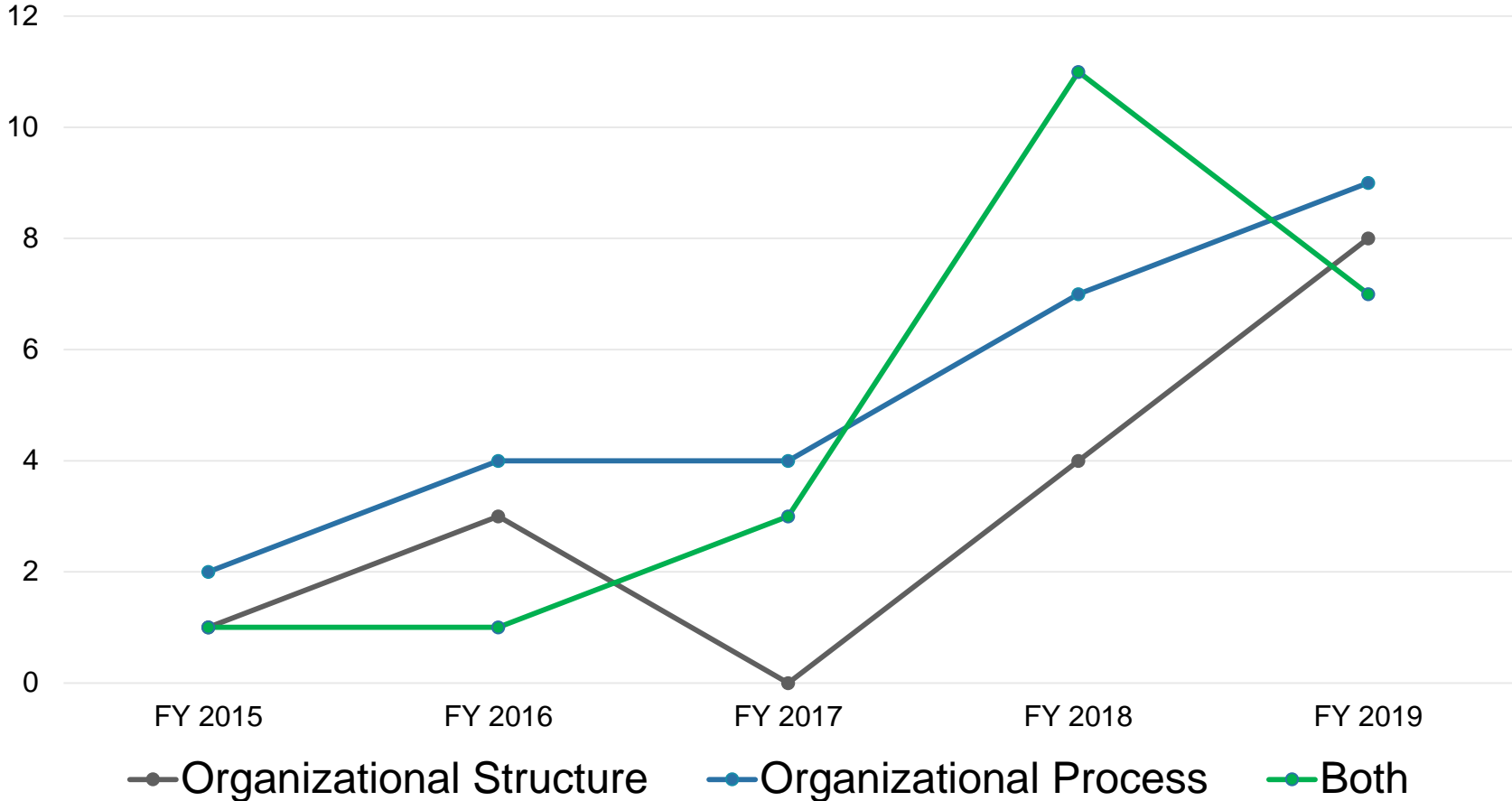
# Awarded Grants focused on Healthcare Organizational Structure and/or Process (FY15-FY19)

## Awarded Grants by Mechanism



# Awarded Grants focused on Healthcare Organizational Structure and/or Process (FY15-FY19)

## Award Grants by Healthcare Organization Characteristic





# Why organizational research?

## Multilevel Research

- Meeting and monograph on ML research 2012
- Funding announcements

## Scientific Gaps

- Response to challenges from scientific community

## Evidence

- Interrelationship of organizations, healthcare delivery and outcomes
- Healthcare delivery takes place in complex organizations

# What have we done & learned?

1

Organizational research in healthcare workshop

2

Encourage multilevel approaches and focus on organizational factors in our funding announcements

3

Multilevel training workshop



# Organizational Research in Healthcare Workshop



- **Why:** Healthcare delivery takes place in complex organizations. The role of the organization in the delivery of cancer-related care is a current research priority and integral to our work in multilevel research.
- **Focus:** Review the state of organization science, primary measurement, and intervention strategies in the context of cancer care delivery
- **Web access to lectures and slides:**  
<https://healthcaredelivery.cancer.gov/media/organizational-research-workshop.html>

# FOA: Linking the provider recommendation to adolescent HPV vaccine uptake

*PAR-19-360 (R01), PAR- 19-358 (R21), PAR-19-359 (R03)*

- Encourages research on how delivery system enhances or inhibits effectiveness of a provider's recommendation
- Requirements
  - Primary data collection in clinical setting
  - Geographic areas where HPV vaccination low
  - Girls and boys ages 11 to 12 years
  - Consideration & measurement of characteristics at three levels (provider, patient/parent, and practice setting)
- Research requires expertise in cancer prevention, adult and childhood behavior, immunization promotion, and healthcare delivery
- HDRP Program Director: Sarah Kobrin ([kobrins@mail.nih.gov](mailto:kobrins@mail.nih.gov))
- [Preapplication webinar](#)



# Notice of Special Interest (NOSI):

Research to improve interprofessional teamwork and coordination during cancer diagnosis & treatment

*NOT-CA-19-059*

- **NOSI** = NIH Guide Notice used to share, update research priorities
- **NOT-CA-19-059 encourages research that...**
- Identifies effective strategies for improving performance of interprofessional cancer care teams during cancer diagnosis and treatment
- Addresses care coordination challenges:
  - Within and/or between care settings (e.g., between inpatient-outpatient settings or between tertiary care and community settings)
- **Expiration date:** January 8, 2022
- HDRP Program Directors: Sallie Weaver, Veronica Chollette
- [Preapplication webinar](#)



# Notice of Special Interest (NOSI):

## De-implementation of ineffective or low-value clinical practices along the cancer care continuum

*NOT-CA-20-021*

- **Issued:** January 6<sup>th</sup>, 2020
- **Definition:** De-implementation research is broadly defined as the scientific study of factors, processes, and strategies for reducing, replacing, or stopping the use of ineffective or low-value clinical practices in healthcare delivery settings.
- **Goal:** Study the de-implementation of ineffective or low-value clinical practices, programs, treatment, or interventions (“practices”) along the cancer care continuum from detection to end-of-life.
- **First available due date:** March 6<sup>th</sup>, 2020
- **Expiration date:** May 10<sup>th</sup>, 2022
- **Program Directors:** Erica Breslau, Wynne Norton
- **Preapplication Webinar:** January 22 at 2:00pm

## Supported research network

Population-based  
Research to Optimize  
the Screening PROcess  
(PROSPR)



- **Goal:** better understand how to improve the cancer screening process (recruitment, screening, diagnosis, referral for treatment) in community healthcare settings
- **Cancers:** Cervical, colorectal, and lung

<https://healthcaresdelivery.cancer.gov/prospr/>

# Supported research network

## NCI Community Oncology Research Program (NCORP)



A program of the National Cancer Institute  
of the National Institutes of Health

- **Goal:** Design, conduct clinical trials (including care delivery research)
- **Study** clinically important and sustained modification of the structures and processes of cancer care delivery to improve clinical outcomes, enhance patient experiences, and optimize value
- **Research Bases** (7) lead study development and provide infrastructure
- **Community sites** (32) and Minority and Underserved sites (14) inform study development and conduct work

<https://ncorp.cancer.gov/>

# Multilevel Training Institute



- **Goal:** Provide participants with a thorough grounding in conducting multilevel intervention research with a specific focus on cancer across the cancer control continuum
  
- **When:**
  - **One day:** April 1 (SBM, San Francisco) or May 6 SGIM (Birmingham)
  - **Distance:** June through November 2020
  
- **Application Deadline:** January 20, 2020
- **Application Notification:** February 10, 2020

<https://healthcaredelivery.cancer.gov/mlti/>

## In closing

- Thank you for your attention and participation!
- NIH Regional Seminars on Program Funding and Grants Administration

April 20-22, 2020 Harborplace Hotel, Baltimore, MD

October 28-30, 2020 Nashville, TN

<https://regionalseminars.od.nih.gov/baltimore2020/>

# Connect with us online

The screenshot shows the homepage of the Healthcare Delivery Research Program. At the top left is the NIH logo and the text "NATIONAL CANCER INSTITUTE Division of Cancer Control & Population Sciences". To the right is a search bar. Below the header is a navigation menu with links for Home, Funding, Data & Tools, Research Networks, Areas of Interest, News & Events, and About. The main content area features a large group photo of diverse researchers and a text box stating: "Health care delivery research is conceptualized as the study of cancer care, factors influencing care, and outcomes of care." Below this are three promotional cards: "Funding Opportunity Announcements (FOAs)" with an icon of a document and a magnifying glass, "Data and Tools for Research" with an icon of a laptop and documents, and "Upcoming Events" with an icon of a calendar and a briefcase.

**NIH** NATIONAL CANCER INSTITUTE  
Division of Cancer Control & Population Sciences

Search

**Healthcare Delivery Research Program**

Home Funding Data & Tools Research Networks Areas of Interest News & Events About

Health care delivery research is conceptualized as the study of cancer care, factors influencing care, and outcomes of care.

**Funding Opportunity Announcements (FOAs)**  
Apply to currently open FOAs sponsored or so-sponsored by HDRPP, other FOAs relevant to HDRP, and NIH and NCI Parent and Omnibus FOAs for investigator-initiated research

**Data and Tools for Research**  
Explore HDRP-supported research resources used to address questions across the cancer control continuum

**Upcoming Events**  
Browse upcoming webinars that highlight current funding opportunities or hot topics in healthcare delivery research

<https://healthcaresdelivery.cancer.gov>

@NCICareDelivRes

# Questions & discussion

[breslaue@nih.gov](mailto:breslaue@nih.gov)

[sallie.weaver@nih.gov](mailto:sallie.weaver@nih.gov)