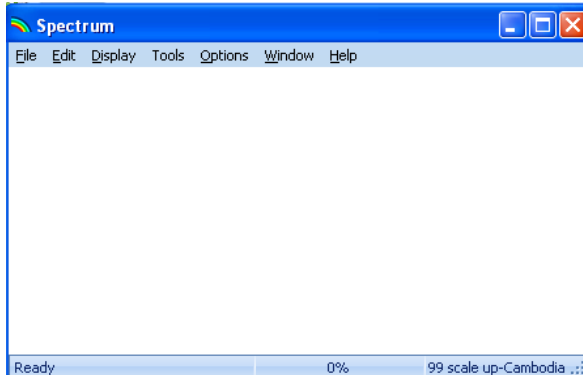
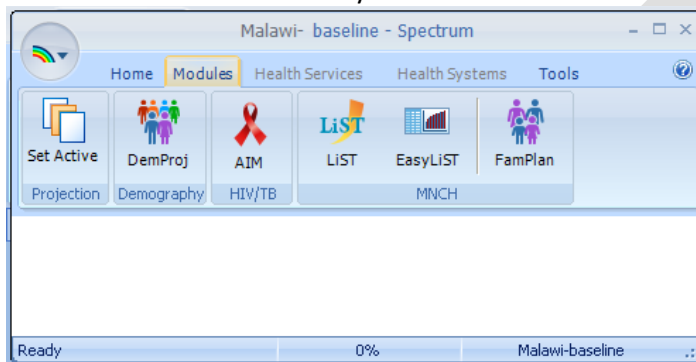


Running an EasyList Analysis: a cheat sheet

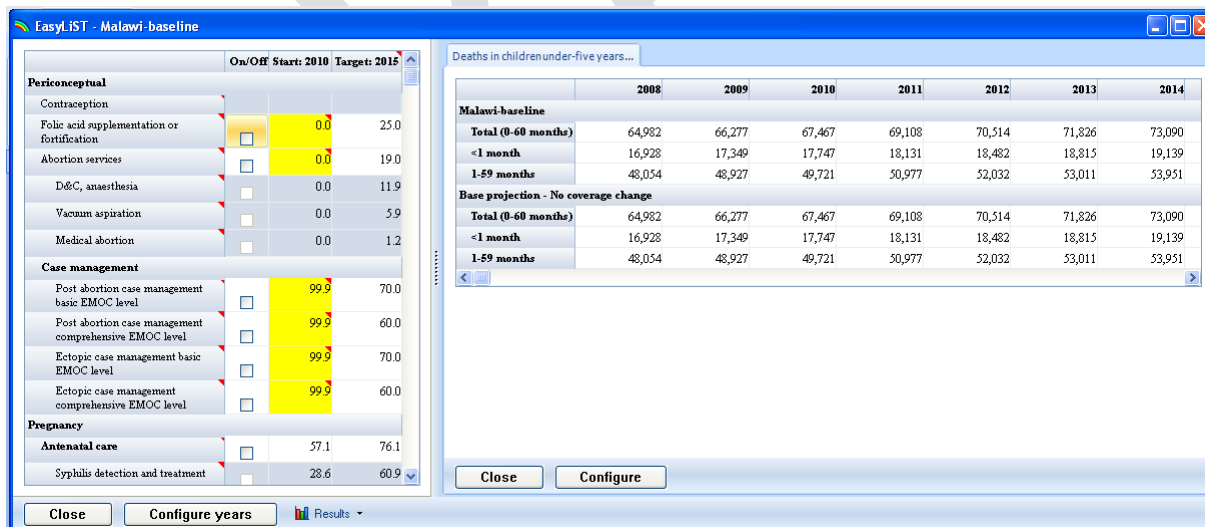
- 1) Install Spectrum/LiST and open your country projection, as described in 'InstallingLiST'.



- 2) Click 'Modules' and Click 'EasyLiST'.

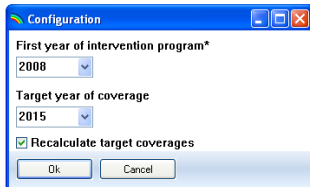


- 3) You will need to wait for 2-3 minutes while the software does some calculations.



- 4) Select 'Configure Years' from the bottom left hand corner.

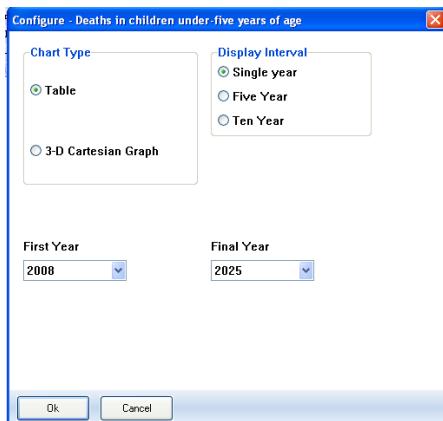
Running an EasyList Analysis: a cheat sheet



- 5) Choose the appropriate 'First year of intervention program' and 'Target year of coverage' either from the drop-down menus or by typing in the years. 'First year of intervention program' should be the baseline year from which all increases in coverage will be calculated. The 'Target year of coverage' is the year in which full coverage should be achieved. Click 'OK' when finished.

HINT: You know that this is correct if when you return to the main EasyLIST page the start and target years are now the selected years.

- 6) You should save these changes now! Select 'Close' in the bottom left hand corner. From the 'File' menu, choose 'Save Projection As' and rename the projection. This is now your 'Baseline' projection for future analyses. Return to EasyLIST as described in steps 2-3 above.
- 7) Select 'Configure' from the bottom right hand corner of the EasyList page.



- 8) Select the 'First year' and 'Final year' to display the years of interest. Typically, this will be the same years as selected above as the 'First year of intervention program' and 'Target year of coverage'. Click 'OK' when finished.

HINT: This does not affect any calculations, but limits the displays to those of interest.

- 9) To find an intervention for scale-up, use the vertical scroll bar in the middle of the screen to move up and down the list of interventions. After selecting one (or more), click on the 'On/Off' check-box next to the name of the intervention.

HINT: If you do not check the 'On/Off' box for the intervention of interest, no lives saved will be calculated.

- 10) In the target column, type in the value that you would like as your target value. You may also choose to keep the standard value.

Running an EasyList Analysis: a cheat sheet

- 11) When you have selected all interventions and entered all target values, click the 'Results' box in the bottom left hand corner of the screen and select the desired outputs.

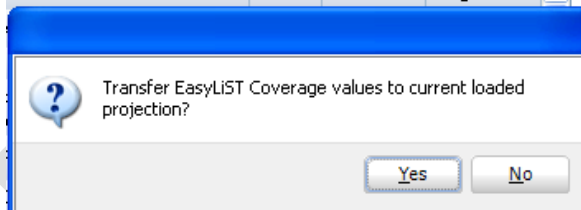
| Deaths in children under-five years of age | | | | | | |
|---|--------|--------|--------|--------|--------|--------|
| | 2010 | 2011 | 2012 | 2013 | 2014 | 2015 |
| Senegal | | | | | | |
| Total (0-60 months) | 51,030 | 51,252 | 51,425 | 51,528 | 51,524 | 51,447 |
| <1 month | 15,633 | 15,292 | 14,932 | 14,558 | 14,169 | 13,766 |
| 1-59 months | 35,397 | 35,960 | 36,493 | 36,969 | 37,355 | 37,681 |
| Base projection - No coverage change | | | | | | |
| Total (0-60 months) | 51,030 | 51,776 | 52,465 | 53,083 | 53,595 | 54,037 |
| <1 month | 15,633 | 15,823 | 15,993 | 16,150 | 16,293 | 16,423 |
| 1-59 months | 35,397 | 35,953 | 36,473 | 36,933 | 37,302 | 37,614 |

- 12) On the right-hand side of the screen, two results will appear. The bottom projection 'Base projection – No coverage change' is the baseline assuming constant coverage from the 'First year of intervention' through the 'Target year'. The top projection displays the impact of the selected interventions.

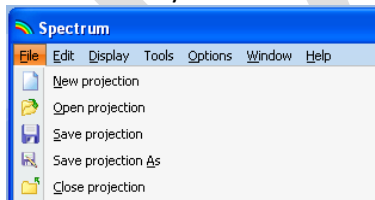
- 13) To see other results, click on 'Results' in the bottom left hand corner which lists the display options. Initial default is 'Deaths in children under-five years of age'.

- 14) OPTIONAL:

- a. If you would like to save the intervention coverage changes that were selected, click the 'Close' button in the bottom left hand corner of the screen.



- b. Select 'Yes' if you would like to save the changes that you made for future analysis.



- c. Select 'Save projection As' from the 'File' menu and rename this file.

HINT: You must rename the projection or you will copy over your original file and it will be unrecoverable!

- d. Close the new projection and select 'Open Projection' from the 'File' menu. Re-open the 'Baseline' projection created in step 6 and return to EasyLIST as in steps 2-3 above.