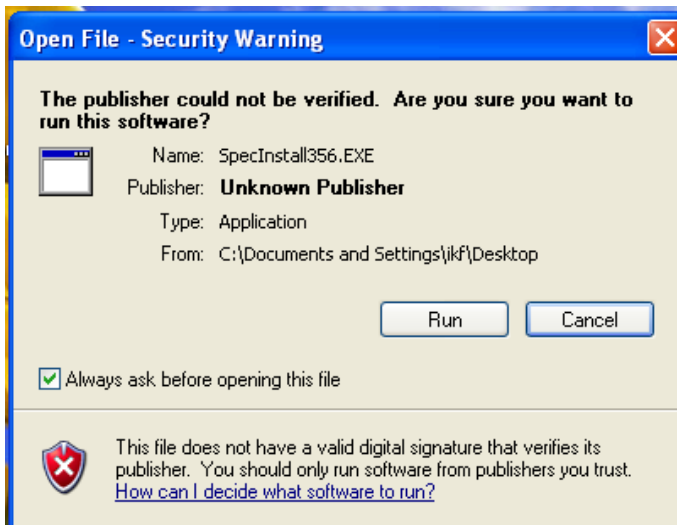
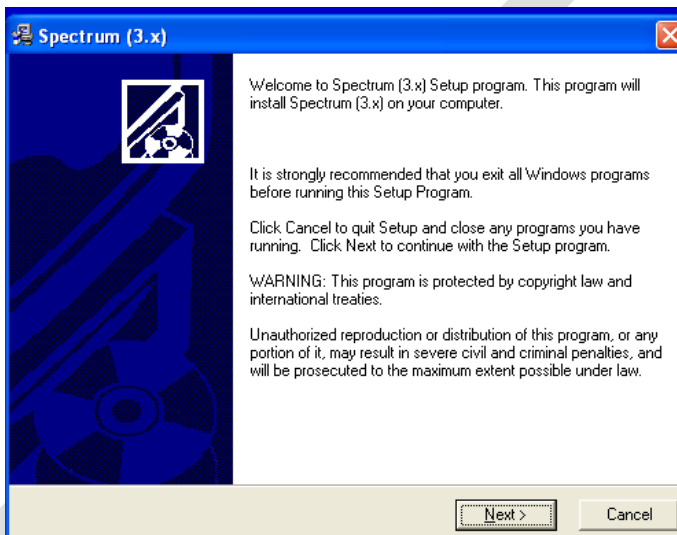


Installing Spectrum and LiST:

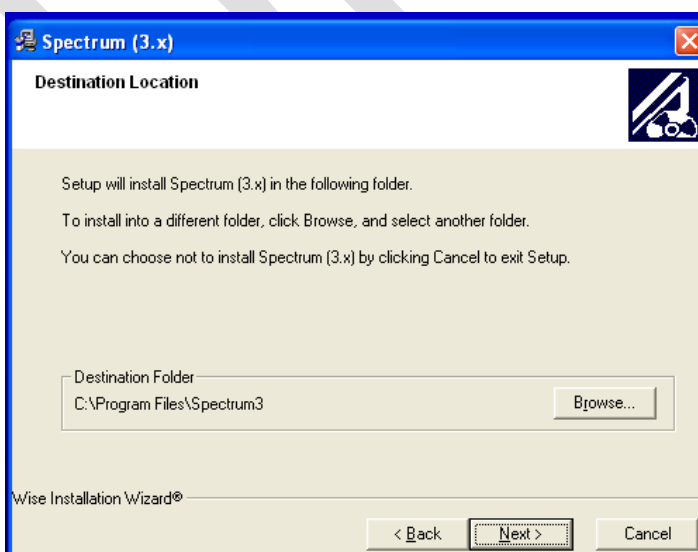
- 1) Double click on the file called 'SpecInstall'.



- 2) Then select 'Run'.



- 3) Select 'Next'.



- 4) Note the destination folder (i.e. C:\Program Files\Spectrum4) as you will need to navigate to this location. Select 'Next'. You will select Next 3 additional times, for a total of 4 selections.

Installing Spectrum and LiST:

- 5) Spectrum has been installed.
- 6) (Optional): Navigate to the destination folder and right-click on the Rainbow.



- 7) Select the 'Send to' option and send a copy of this program to the desktop.

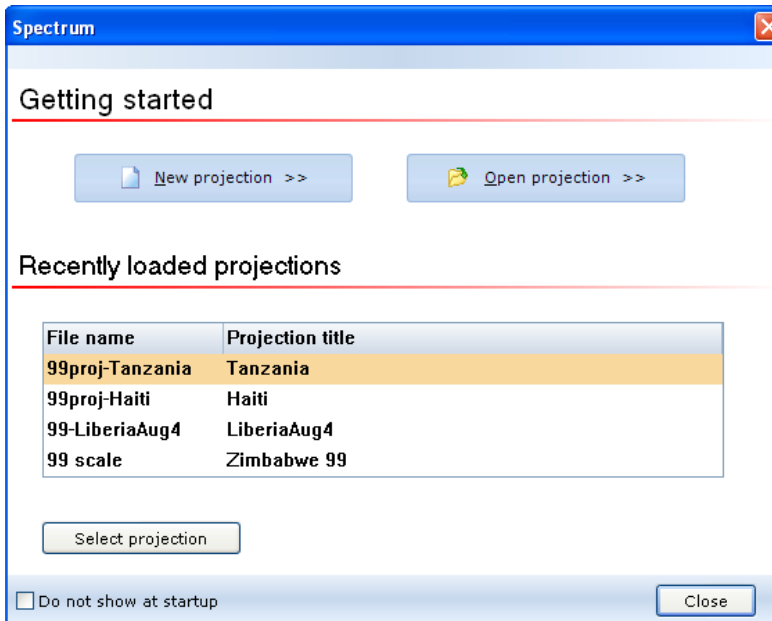


- 8) You can now access Spectrum/LiST either from the new desktop icon or from the 'All Programs' menu.

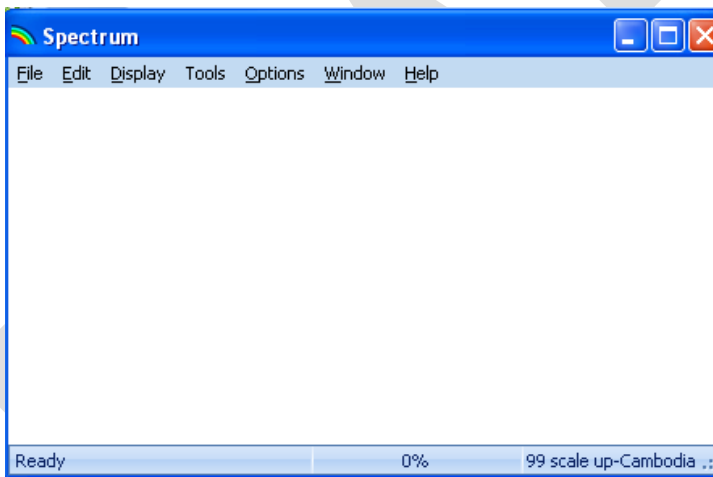
Getting Started with Spectrum and LiST: a cheat sheet

- 1) Copy the folder called 'Country Projections' to the folder called 'Data' under 'My Documents', 'Spectrum'. Unzip everything to the same folder. This may involve extracting everything or using WinZip or some other software. There are many variations. When finished you should see 5-7 files with the same name and different endings (i.e. .CS, .DP, .DPP, FP4, .IV, .AIM, .PJM). They must ALL be in the same folder together in order to work. Also, you CANNOT open these files directly. They can ONLY be opened via Spectrum.
- 2) Open Spectrum by either double-clicking the desktop icon or by clicking on the 'Start' button in the bottom left hand corner and selecting the Spectrum software.

Installing Spectrum and LiST:



- 3) From this above screen, select 'Open Projection'. Navigate to the 'Data' folder where you saved the unzipped country projection files. (Only the .PJN files will appear; this is normal.)
- 4) Select your country of interest. (Double-click or single-click followed by selecting the 'Open' button.)



- 5) You will know that it is done correctly because you have a blank screen with the name of the projection/country in the bottom right hand corner of the screen.