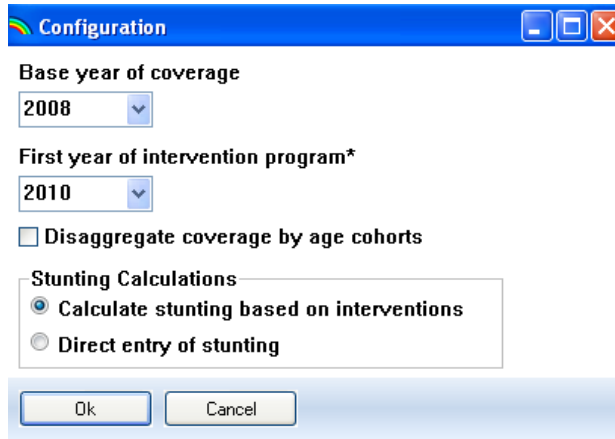
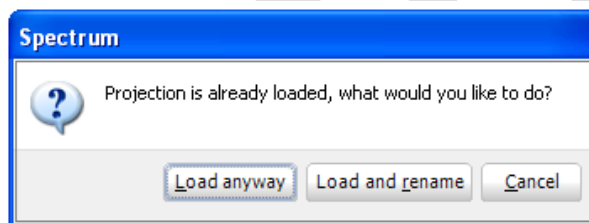


Running a Family-Planning and LiST Analysis: a cheat sheet

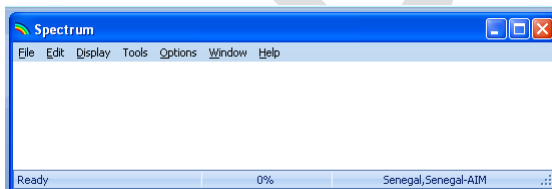
- 1) Open the country projection of interest. From the 'Edit' menu, select 'Lives Saved Tool (LiST)'. Choose to enter 'ExpertMode'. Click OK.
- 2) Click the 'Configuration' button.



- 3) Do NOT change the 'Base year of coverage' unless you have new cause-of-death data. The 'First year of intervention program' is the baseline year from which you want to calculate your scale up from. Click OK when finished.
- 5) Click 'Close'. Under the 'File' menu, select 'Save Projection As' and rename the file two times.
- 6) Under the 'File' menu, select 'Open Projection' and choose the new file that you have just saved.

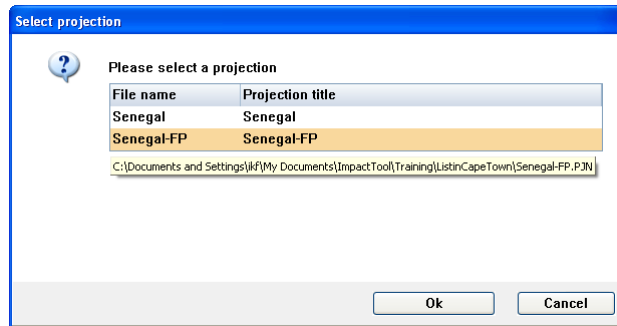


- 7) Choose 'Load and rename'. Rename this file twice to indicate that you are doing a Family Planning analysis. When you are finished, you should have two projections, with different names, but identical data listed in the bottom right corner of the screen.

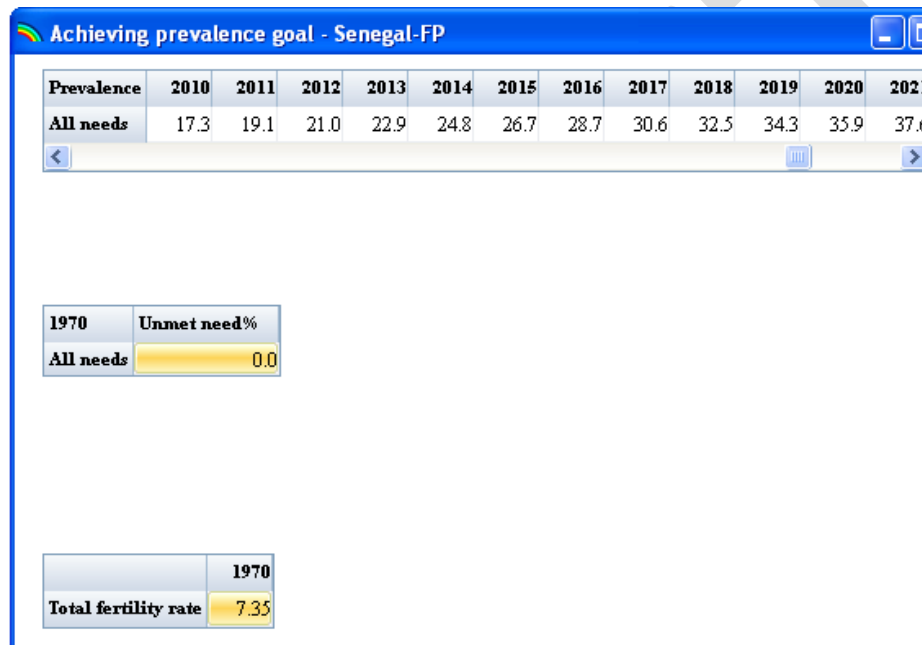


- 8) From the 'Edit' menu, select 'Family Planning (FamPlan)'.

Running a Family-Planning and LiST Analysis: a cheat sheet



- 9) Choose the projection in which you want to change the family planning information.
- 10) If you plan on altering the Contraceptive Prevalence Rate (CPR) in your population, click 'Goal'.



- 11) By default, the CPR is set to match the values in the most recent survey and then extrapolated to the end of the projection to maintain the UN Population division TFR estimates. Change the values in the target year and use the interpolate and duplicate functions as needed. Click OK.
- 12) If you want to change the proportion of women using different methods for contraception, click on the 'Family Planning' button.

Running a Family-Planning and LiST Analysis: a cheat sheet

Method	1970	1971	1972	1973	1974	1975	1976	1977	1978	1979	1980
Condom	14.0	14.0	14.0	14.0	14.0	14.0	14.0	14.0	14.0	14.0	14.0
Female sterilization	4.7	4.7	4.7	4.7	4.7	4.7	4.7	4.7	4.7	4.7	4.7
Injectable	29.9	29.9	29.9	29.9	29.9	29.9	29.9	29.9	29.9	29.9	29.9
IUD	4.7	4.7	4.7	4.7	4.7	4.7	4.7	4.7	4.7	4.7	4.7
Implant	5.6	5.6	5.6	5.6	5.6	5.6	5.6	5.6	5.6	5.6	5.6
Pill	33.6	33.6	33.6	33.6	33.6	33.6	33.6	33.6	33.6	33.6	33.6
Traditional	6.5	6.5	6.5	6.5	6.5	6.5	6.5	6.5	6.5	6.5	6.5
Vaginal barrier	0.9	0.9	0.9	0.9	0.9	0.9	0.9	0.9	0.9	0.9	0.9
Total	100.0	100.0	100.0	100.0	100.0	100.0	100.0	100.0	100.0	100.0	100.0

- 13) Choose the 'Method Mix' tab. Adjust the proportions of women using different contraceptive methods. The total must equal to 100%. Use the duplicate, interpolate and normalize functions as needed. When finished, Click OK.
- 14) NOTE: If you have a different goal, i.e. TFR, or unmet need, you will need to visit the 'Configuration' button first and read the FamPlan manual.
- 15) Once you have made all of your changes in the Family planning module, click 'Close'.
- 16) On the modules menu, select 'Lives Saved Tool (LiST)'. Click 'Results' and choose the output of interest. Typically, one will want to select 'Deaths in children under-5 years of age'.

Deaths in children under-five years of age						
	2010	2011	2012	2013	2014	2015
Senegal						
Total (0-60 months)	51,030	51,776	52,465	53,083	53,595	54,037
<1 month	15,633	15,823	15,993	16,150	16,293	16,423
1-59 months	35,397	35,953	36,473	36,933	37,302	37,614
Senegal-FP						
Total (0-60 months)	51,030	51,427	51,600	51,593	51,406	51,089
<1 month	15,633	15,716	15,729	15,697	15,628	15,527
1-59 months	35,396	35,711	35,871	35,896	35,779	35,563

- 17) There are fewer deaths in the population in which the contraceptive prevalence was increased. This occurs due to the reduction in the number of pregnancies and births. There is no impact on the mortality rates.