

SOURCE

THE NEWSLETTER OF THE STUDENT OUTREACH RESOURCE CENTER

SOURCE's Fall Tri-School Day of Service Announced—Sat, Nov 5th

On Sat, November 5th, students are invited to participate in the SOURCE Fall Day of Service. Available projects include:

HIV/AIDS MEALS: 11 am—2 pm. Moveable Feast needs help boxing meals for homebound individuals living with HIV/AIDS. Help in the kitchen & wear a hairnet! No culinary experience needed.

DEMOLITION PROJECT: 10 am—12 pm. People's Homesteading Group, a non-profit housing developer of homeownership for low income families in East Baltimore is in need of volunteers to do a DEMOLITION project on a vacant property. All of the lead paint has been removed. This will be a very dusty, yet fun, project. Dust masks and gloves will be provided.

IRVINE NATURE CENTER PROJECT: 9 am—1 pm. The Irvine Nature Center will use volunteers to build a bird blind, complete work on their trails, cleanup some property that has been donated by the state, cutting, mulching, gardening, etc.

BELIEVE IN OUR ELEMENTARY SCHOOLS: 9 am—12 pm. The Believe in Our Schools project will consist of painting an elementary school, organizing and clearing out classrooms, etc. This is a joint effort with a number of local colleges and universities.

BELIEVE IN OUR HIGH SCHOOLS: 10 am—1 pm. The Believe in Our Schools project will consist of painting a high school, organizing and clearing out classrooms, etc. This is a joint effort with other local colleges.

WEEDING/GARDENING: 11 am—2 pm. The Men's Center is in need of assistance with weeding and gardening outside of their facility.

CANVAS THE COMMUNITY: 11 am—2 pm. The Men's Center is seeking volunteers to hand out fliers to promote the Men's Center's services. Volunteers will canvas the community with other community members and Men's Center staff. Work along side community residents!

TO SIGN UP: Email source@jhsph.edu with your name, email, phone number, and top 3 choices. Projects will be assigned on a first-come, first-served basis. SOM, SON, and JHSPH only!



Photo: Students at the Spring Day of Service

Inside this issue:

Day of Service—Nov 5	1
Student Groups	2
SOURCE Resource Room	2
Be a "Model" Citizen	3
MD Food Bank	3
Upcoming Opportunities	4

“Love cannot remain by itself - it has no meaning. Love has to be put into action and that action is service. ”

--Mother Teresa

Student Groups—Work with SOURCE

Did you know that SOURCE is available to assist your student organizations with programming and service projects? We are available to provide your student groups with a variety of resources for these special events.

Finding Community Speakers:

If your organization is interested in topics that relate to the Baltimore community, the health issues we face here in the city, community development issues, or other requests of this nature, then contact SOURCE. Through our extensive network of community partners, we can assist you in identifying speakers from our own backyard. If your group and SOURCE decide to collaborate on a speaking engagement, we'll help plan and pay for the event as well.

Organizing Service Projects:

Is your organization interested in organizing a service project? Looking for a 1-time project? Interested in an on-going opportunity related to your group's mission? Again, SOURCE can help your student group. We gather information from our partners in the community and can identify community organizations that are able to coordinate group volunteer projects. If you are looking for something more sustainable, we can also be of service.

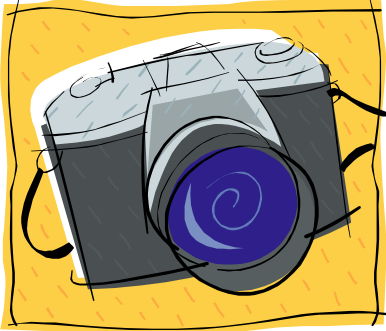
Contact SOURCE at 410-955-3880 or source@jhsph.edu.

SOURCE Resource Room—E3001

Heard about the SOURCE Resource Room? It has many resources that are useful for those interested in working with the community. The Resource Room is in the School of Public Health (615 N. Wolfe St. E3001) and is open during business hours. We have extensive files on all of our partnering CBOs, literature racks, group meeting space, storage areas for service-based groups, mail boxes, and more. We can even handle your faxes and phone calls. There is an additional computer (with printer) for service project planning as well. Stop by and check out the room or contact SOURCE for more details.



Be a “Model Citizen” - Seeking SOURCE Models



SOURCE is currently partnering with students from the Maryland Institute College of Art (MICA) to create a number of recruitment posters and presentations. We are searching for students who are involved in the community (volunteers, FWS students, interns, etc.) and are willing to be a part of our SOURCE campaigns.

Once we identify all our SOURCE models, we'll work with the MICA students to schedule a photo shoot. This is a great way to increase visibility for the community groups that you assist, and to encourage others to join you.

If interested, please contact SOURCE at 410-955-3880 or source@jhsph.edu with your name, email, phone number, community organization that you work with, and your typical volunteer hours (for scheduling purposes). Strike a pose!

*"If you find
it in your
heart to
care for
somebody
else, you
will have
succeeded.
"*

*-- Maya
Angelou*

CBO Spotlight—The Maryland Food Bank

The Maryland Food Bank is one of the over 90 community-based organizations within the SOURCE network of partners. The food bank recently moved to its new location at 2200 Halethorpe Farms Road in Baltimore. The Food Bank was founded in 1979 and supplies food to over 45,000 Marylanders each week, including families, elderly, homeless and the unemployed. The agency also provides the following:

- On Going Support
- Nutrition and Food Safety Instruction
- Food Drives, Community Service Opportunities

In collaboration with the JHU Women's Network, SOURCE is assisting with the Fall Food Drive for the MD Food Bank. Please donate non-perishables (except glass) to the cause through **Mon, October 31st**.

More information about the Maryland Food Bank, ways to volunteer and their other initiatives can be found online at: www.mdfoodbank.org.

A complete directory of our other partnering community-based organizations in the SOURCE network can be found on our website:
www.jhsph.edu/source.

Student Outreach Resource Center (SOURCE)
Serving the Johns Hopkins University Schools of
Medicine, Nursing and Public Health

Johns Hopkins Bloomberg School of Public Health
615 N Wolfe Street, Room E3003
Baltimore MD 21205

Phone: 410-955-3880
E-mail: source@jhspsh.edu

We're on the web!
www.jhsph.edu/source

Upcoming Involvement Opportunities:

The Connection – Community Consultants “Meet and Greet” – Mon., Oct. 31st

Interested in serving as a community consultant for a community-based organization? Join the Connection, a team of students working on short-term projects. On Monday, October 31st, join other interested students for a “Meet and Greet” from 12:30 – 1:30 pm in the School of Public Health (615 N. Wolfe St.) E6519. Light refreshments will be served. For more information on the Connection, go to the website at: <http://www.jhsph.edu/source/Students/Consultant>. Both a resume/CV and a Profile Form are needed to become a consultant.

Holiday Reading Program – Mon., Oct. 31st

The Office of Corporate and Community Services of the Johns Hopkins Health Systems is in need of Holiday Reading Volunteers for Monday, October 31st from 8:30 – 10:30 am. Volunteers will be reading to classes of elementary school students and also handing out Halloween treats. Free transportation is provided and will leave from the front entrance of the Phipps Building (Johns Hopkins Hospital). You must RSVP in order to participate. Please email: Elana Omari (omariam@jhmi.edu) or call (410) 614-0744 for more information.

Harbor Biological Attack Simulated Event, Volunteers Needed – Wed., Nov. 16th

The Baltimore City Health Department, the State of Maryland and other participating agencies will be conducting an exercise for the third year called Harbor Biological Attack Simulated Event or Harbor BASE III. This exercise tests and better prepares the city, state, and federal resources in the event of a public health emergency. Volunteers are needed as patients at community health clinics at the Carroll Park PAL Center and the Fort Worthington PAL Center. Volunteers will be given lunch and a tee shirt and are needed from 8 am – 12 noon. We are in need of 300 volunteers. If you are interested in volunteering, please contact Leah Littlefield at (410) 706-3996 or Dr. Christa-Marie Singleton (443) 984-2621. Registration forms and waivers are also available in the SOURCE Office, located in Room E3003 (JHSPH, Wolfe St.)